

## **New monthly check of cell rinse tubes on the c 703 Analytical Unit**

Dear customer

An issue has been identified in which there has been premature damage to the tubing of the Reaction Cell Wash units for the cobas c 703 Analytical Unit.

To prevent occurrences of premature damage to the Reaction Cells Wash tubing Roche Diagnostics' Service Team will schedule additional service visits to replace tubing every 6 months.

In addition the monthly customer maintenance schedule was adjusted to allow for more frequent inspection of the rinse tubes. This new monthly customer maintenance is a visual check of the Reaction Cells Wash tubing when executing the monthly operator maintenance action "Replace Reaction Cells". In case you identify any damage on the tubing, please report the damage to your local Roche Service Representative.

### **Step 1**

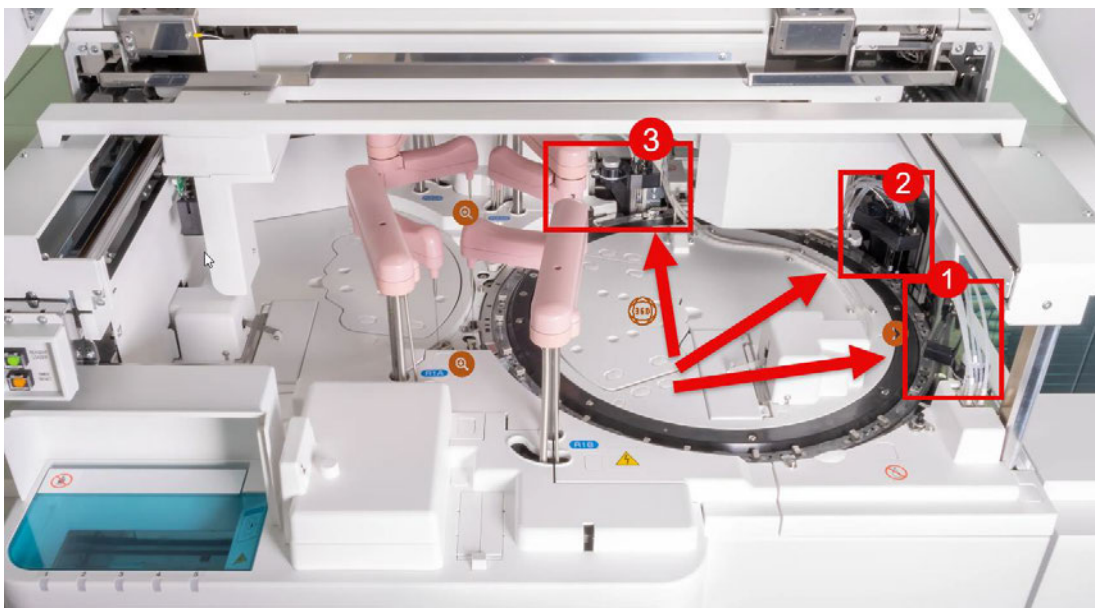
The c 703 module is in maintenance action "Replace Reaction Cells".

### **Step 2**

Open the top main cover of c 703 module.

### **Step 3**

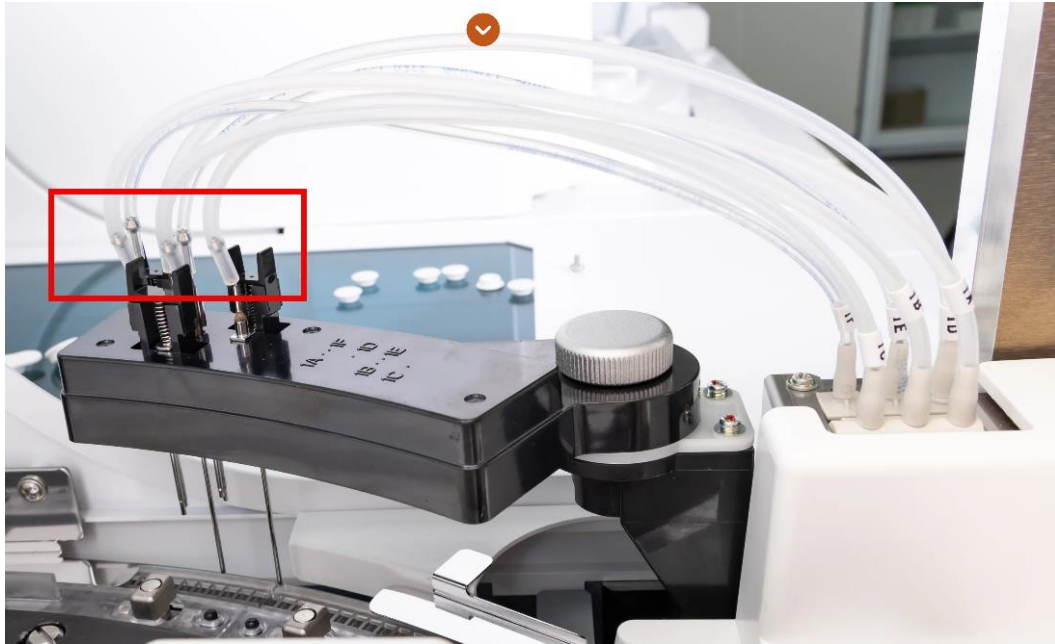
Check the tubes on all three rinse stations.



*Overview of Rinse station 1-3*

#### Step 4

Check the tubes of **Rinse station 1** for any damages on the whole length. The most critical part is the connection between tube and needle (see red box in the picture).



Overview of Rinse station 1

#### Step 5

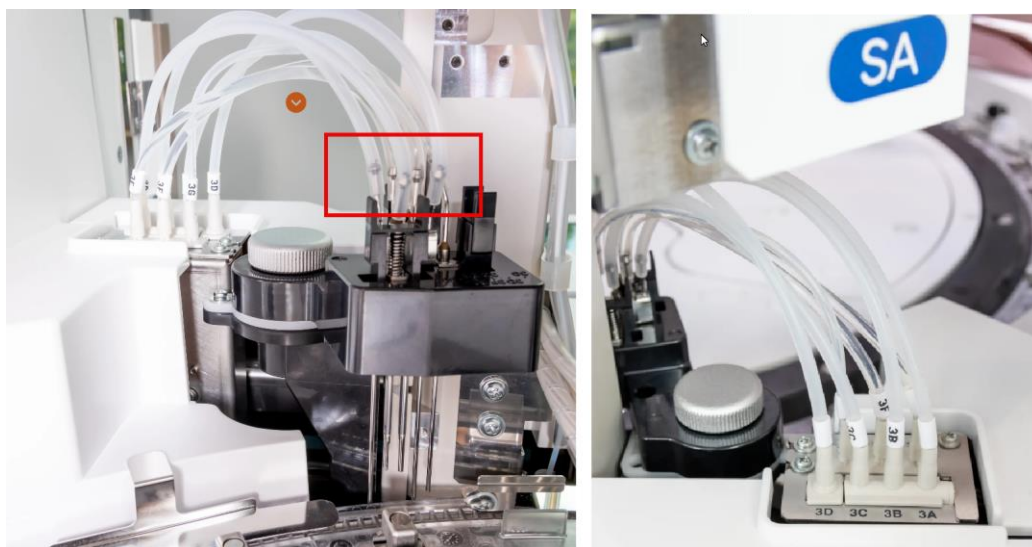
Check the tubes of **Rinse station 2** for any damages on the whole length. The most critical part is the connection between tube and needle (see red box in the picture).



Overview of Rinse station 2

### Step 6

Check the tubes of **Rinse station 3** for any damages on the whole length. The most critical part is the connection between tube and needle (see red box in the picture).



*Overview of Rinse station 3*

### Step 7

If you find any damage on the tubes of Rinse station 1-3, please contact your local Roche Service Representative immediately.

### Step 8

Finish the monthly maintenance “Replace Reaction Cells” and close the main cover of c 703.

### Step 9

END

With kind regards

*\*Placeholder Roche Organization\**